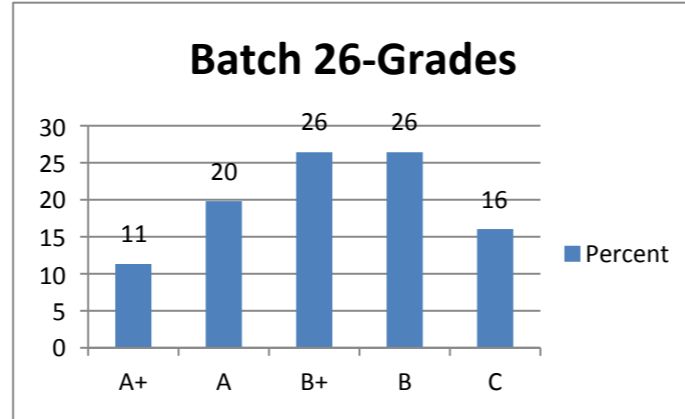


Batch 26 - Grades

Grade	Frequency	Percent
A+	12	11
A	21	20
B+	28	26
B	28	26
C	17	16
Total	106	100

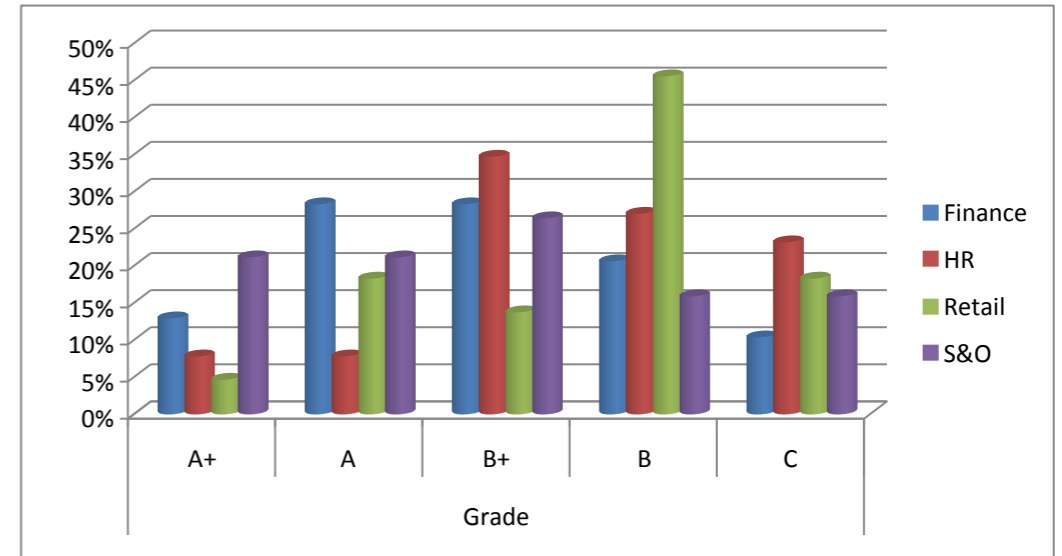


Grades - Specialisation wise

Specialisation * Grade Crosstabulation

Percentage within Specialisation

		Grade					Total
		A+	A	B+	B	C	
Specialisation	Finance	13%	28%	28%	21%	10%	100%
	HR	8%	8%	35%	27%	23%	100%
	Retail	5%	18%	14%	45%	18%	100%
	S&O	21%	21%	26%	16%	16%	100%
Total		11%	20%	26%	26%	16%	100%



	Grade				
	A+	A	B+	B	C
Finance	13%	28%	28%	21%	10%
HR	8%	8%	35%	27%	23%
Retail	5%	18%	14%	45%	18%
S&O	21%	21%	26%	16%	16%

